

Calleija



Argyle
Dreaming™



Calleija

RARE. BEAUTIFUL. EXCEPTIONAL



Inspired by the Ancient Beauty of Nature

Argyle Dreaming™ was inspired by her origins in the breathtakingly beautiful Kimberley region of Western Australia. Here, the first signs of diamonds were discovered in 1979 and the renowned Argyle diamond mine started revealing her treasures over the coming decades.

As the source of more than 90% of the world's supply of Pink Diamonds, this remote and stunning landscape became a global icon for one of nature's rarest marvels.



Honouring Natural Rarity

Argyle Pink Diamonds are the rarest and most beautiful of diamonds. Although the Argyle diamond mine was the primary source of the world's Pink Diamonds, less than 0.01% of the mine's total production was pink.

No other mine in the world had diamonds with such a saturated pink colour as the Argyle mine. Their unique blushing colours range from Purplish Pink, Pink, Pink Rosé, Pink Champagne to the elusive Red, Purplish Red and Blue Violet.

The extreme scarcity of Argyle Pink Diamonds means owning one is the privilege of a lifetime. Their rarity and beauty have made Argyle Pink Diamonds the most desired and valuable diamonds around the world.

To adorn Argyle Dreaming™ with a beautiful range of different Argyle Pink Diamonds was an extraordinary honour for Calleija. These remarkable gems were cared for with utmost reverence and respect during the creation of Argyle Dreaming™.



A Call for Creativity

The story of Argyle Dreaming™ started with a phone call from Rio Tinto and an offer Calleija could not refuse. The Rio Tinto team had just uncovered an incredible 13.42ct rough diamond from the Argyle Mine. It was potentially one of the very last of such remarkable size ever to be unearthed from the mine.

Only the hands of extremely skilled diamond cutters were able to transform the 13.42ct rough diamond into a 3.55ct White Diamond and a 1.08ct White Diamond. These diamonds were issued an exclusive Orignis certificate by Rio Tinto to verify their Argyle Diamond origins. Not only is the unique identifying number of each diamond included on the certificate, it is also inscribed on the girdle of the diamond.

Impressed with Calleija's renowned artistry, Rio Tinto, the owners of the Argyle mine, asked Calleija to design and create a piece of jewellery that would showcase these outstanding diamonds and illustrate the story of the iconic Argyle diamond mine.

Inspired by the mine's origins near the sunburnt lands and snaking rivers of the East Kimberley region of Western Australia, Calleija artisans spent over 800 hours designing and crafting Argyle Dreaming™ to perfection.

Handcrafted in the Calleija flagship boutique, the Argyle Dreaming™ necklace and ring were created with six hundred and seventy-four natural Australian Argyle White and Fancy Colour Diamonds from the Argyle mine in Western Australia. The Argyle Dreaming™ suite is crafted from an incredible two hundred and thirty-seven grams of gold from Rio Tinto's Kennecott mine in the US.

As a member of the Responsible Jewellery Council, all Rio Tinto diamond mines adhere to the Kimberley Process. The Kimberley Process (KP) unites administrations, civil societies, and industries in reducing the flow of conflict diamonds around the world. Participants of this strict international certification scheme are responsible for stopping 99.8% of the global production of conflict diamonds.



Unique Artistry

With an unparalleled dedication to creativity and brilliance, Calleija artisans crafted Argyle Dreaming™ to have versatile features and mesmerising details. On the left side of this incredible necklace, Yellow, Champagne and Pink diamonds from the Argyle mine are complemented by 18ct Yellow and Rose Gold.

These distinct colours represent the captivating glow of a warm Kimberley sunset, and the people, traditions and community of the Kimberley region are represented by a stunning 1.08ct round brilliant cut White Diamond. This White Diamond is placed centrally within the left golden curve of the Argyle Dreaming™ necklace to symbolise the importance of the Kimberley community and customs.



Inspired by the peaks and troughs of the Kimberley region, the right side of the Argyle Dreaming™ necklace features a unique pattern showcasing the various diamond colours unearthed from the Argyle mine. In true Calleija fashion, each diamond and surrounding metal is crafted with immense precision and designed to curve and move with her wearer. This thoughtful detail illustrates how we as humans influence our landscape and our own story.

Placed in the centre of Argyle Dreaming's right side is a magnificent 3.55ct White Diamond, signifying the mine itself. This brilliant White Diamond can also be interchanged with a Champagne Diamond placed in the centre of the Argyle Dreaming™ ring. This amazing versatile feature illustrates Calleija's talent for inimitable design and exceptional craftsmanship.

To further honour the gorgeous land of the East Kimberley region, Calleija artisans have adorned Argyle Dreaming™ with a curated selection of Argyle Blue Diamonds, some of which are from the 2012 Argyle Tender. These exquisite and incredibly rare gems represent the vast waterways of Lake Argyle.



Argyle Dreaming™ Unveiled in New York

To honour the creation of Argyle Dreaming™, Rio Tinto proudly unveiled her beauty in New York City on October 4th, 2019.

Following Rio Tinto's annual Argyle Pink Diamond Tender, Argyle Dreaming™ continued to enchant event attendees and the media with her stunning beauty and mesmerising details.

Rio Tinto Vice President of Sales and Marketing, Mr Alan Chirgwin said, *"Encapsulating a rich history and an extraordinary provenance, Argyle Dreaming™ is a contemporary treasure and an heirloom for tomorrow."*

Master Craftsman and Jeweller, John Calleija said, *"This was a labour of love, an opportunity to work with the entire Argyle diamond colour palette, from a country that is imbued with rich heritage and dreamings."*

RioTinto

Media Release

Rio Tinto unveils US\$1.1 million iconic Argyle diamond jewellery

4 October 2019

Rio Tinto has unveiled in New York an iconic piece of jewellery handcrafted using Argyle diamonds from its Australian mine and gold that has been mined and minted by Rio Tinto in the US.

The US\$1.1 million necklace and ring known as Argyle Dreaming™, was created by famed international designer, master craftsman and jeweller John Calleija. The one-off necklace and ring pays homage to the ancient landscape and majestic colours of the east Kimberley region of Western Australia, home to the 1.6 billion year old Argyle gems.

Comprising 673 pink, white, yellow, blue and champagne Argyle diamonds and 237 grams of Rio Tinto's Kennecott gold, Argyle Dreaming™ was a painstaking endeavour that took over 800 hours to create.

Mr Calleija said "This was a labour of love, an opportunity to work with the entire Argyle diamond colour palette, from a country that is imbued with rich heritage and dreamings. I am thrilled with the Argyle Dreaming™ necklace and ring. They are a permanent record of the most intriguing diamonds in the world and a beautiful endeavour that highlights Rio Tinto's commitment to integrity and traceability in its diamonds and gold supply chain."

The elegant and versatile necklace design has an exquisite 3.55 carat white Argyle diamond in its centre which can be switched out with the Argyle champagne diamond at the centrepiece of the ring. Argyle's fancy coloured diamonds in shades of pink, blue and yellow are accented throughout the design.

Rio Tinto Vice President of sales and marketing Mr Alan Chirgwin said "Encapsulating a rich history and an extraordinary provenance, Argyle Dreaming™ is a contemporary treasure and an heirloom for tomorrow."

Rio Tinto's Argyle diamond mine is the world's largest producer of coloured diamonds. The mine will close in 2020 after almost four decades of production. Rio Tinto's Kennecott mine is a fully integrated mining operation located outside Salt Lake City in Utah, producing gold and silver as a by-product of its copper production.

The Argyle Dreaming™ necklace and ring will be showcased in New York and London before returning to Calleija's stores in Australia.

High resolution images of the Argyle Dreaming™ necklace and ring are available on [Flash](#).



The Argyle Dreaming necklace and ring, designed by John Calleija. Image credit: Calleija

Calleija unveils \$1 million Argyle diamond necklace and ring

A 3.4 k views | Posted October 08, 2019 | By Arabella Rodan • Former editor

As its Argyle Tender continues touring the world, mining company Rio Tinto has publicly revealed the 'Argyle Dreaming' jewellery set, designed by Australian jeweller John Calleija.

The jewellery made its debut in New York City last week. The necklace and ring feature 673 pink, white, yellow, blue and champagne diamonds from the Argyle Mine in Western Australia, set in gold mined from the Rio Tinto's Kennecott site in Utah, USA.

The pieces are valued at US\$1.1 million (\$AU1.63 million).

Gold Coast-based Calleija, who has two Australian stores and a London boutique, said the Kimberley region inspired his design.

"This was a labour of love, an opportunity to work with the entire Argyle diamond colour palette, from a country that is imbued with rich heritage and Dreamings (indigenous Australian culture and philosophy)," he explained.

"I am thrilled with the Argyle Dreaming necklace and ring. They are a permanent record of the most intriguing diamonds in the world."

The necklace and ring's centre stones – a 3.55-carat white diamond and a champagne diamond



"I am thrilled with the Argyle Dreaming necklace and ring. They are a permanent record of the most intriguing diamonds in the world"

JOHN CALLEIJA, JEWELLER



NECKLACE DETAILS

Argyle Dreaming™ features 480 natural Australian Argyle White and Fancy Colour Diamonds totalling 18.03ct.

Argyle Pink Diamonds, totalling 1.84ct
Argyle Champagne Diamonds, totalling 1.34ct
Argyle Blue Diamonds, totalling 1.46ct
Argyle Yellow Diamonds, totalling 1.63ct
Argyle White Diamonds, totalling 11.76ct

The two principal diamonds in Argyle Dreaming™ were cut from the same 13.43ct Orignis Rough.

One 3.55ct round brilliant cut Argyle White Diamond, colour D, clarity VVS2
One 1.08ct round brilliant cut Argyle White Diamond, colour F, clarity VVS2

Set in 181 grams of 18ct Yellow, White and Rose Gold from Rio Tinto's Kennecott Mine.

Her Companion

Inspired by the rolling canyons that shape the Kimberley region, Calleija artisans created a stunning ring to accompany the Argyle Dreaming™ necklace.

This beautiful ring is adorned with one hundred and ninety-four round brilliant cut Argyle White and Fancy Colour Diamonds totalling 4.16ct.

Taking centre stage is the 0.97ct Champagne Diamond, which can be interchanged with the 3.55ct White Diamond in the Argyle Dreaming™ necklace.

This versatile feature is only enabled with a bespoke release tool created by Calleija artisans. Created from 9.44 grams of 18ct White and Rose Gold, this bespoke tool also features one 0.02ct round brilliant cut Argyle Pink Diamond on its tip with a Colour 6PP and Clarity SI.





RING DETAILS

Featuring 194 round brilliant cut natural Australian Argyle White and Fancy Colour Diamonds totalling 4.16ct.

One Argyle Champagne Diamond, Colour C3, Clarity SI2 of 0.97ct
Argyle White Diamonds, Colour NCP, Clarity SI totalling 1.06ct
Argyle Pink Diamonds, Colour 5/6/7P-PP – 9PR, Clarity SI totalling 1.52ct
Argyle Blue Diamonds, Colour BL1/BL2, Clarity SI totalling 0.60ct

Set in 46.95 grams of 18ct White, Yellow and Rose Gold from
Rio Tinto's Kennecott Mine.

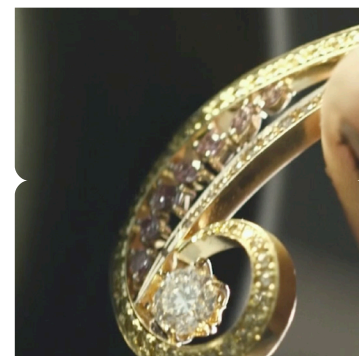
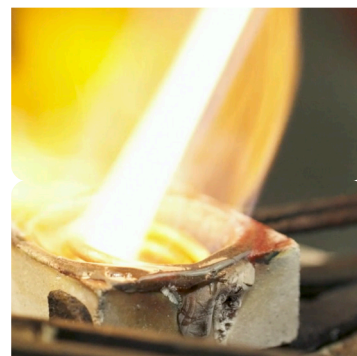
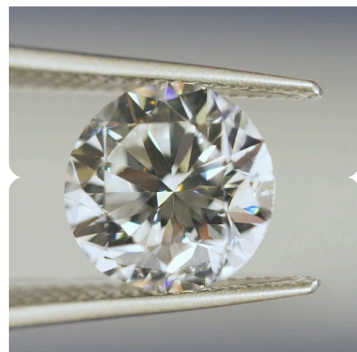


Imagination Unlocked

The Creation of Argyle Dreaming™



With more than 800 hours of artistry and craftsmanship dedicated to her, Argyle Dreaming™ exceeds the norms of design and beauty.





Argyle Dreaming™ Art by Go Suga

To celebrate Argyle Dreaming™, Japanese-Australian artist, Go Suga was commissioned to paint an illustration inspired by her design and beauty.

Acclaimed for his mystical and vibrant illustrations which blend cultures, colours, shapes and movement, Go Suga is one of the world's leading talents of modern art.

Pictured on the right, Go Suga paints his inspiration of Argyle Dreaming™ on the evening of its unveiling on the Gold Coast.

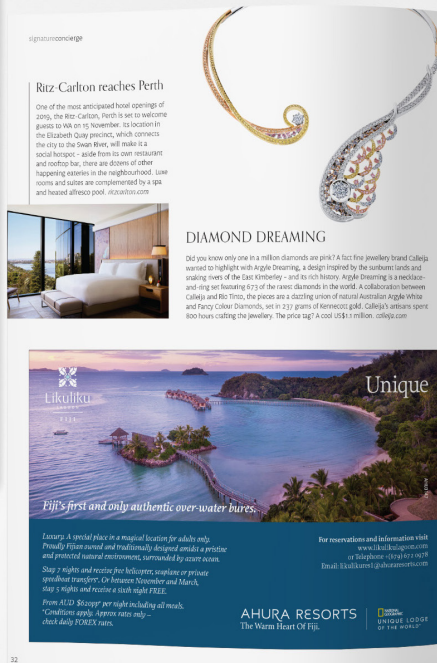
In the Media



Calleija artisans were thrilled to see the award-winning *Cove Magazine* feature Argyle Dreaming™ on their cover and in their editorial.



Leading luxury and lifestyle publication,
Signature Luxury Travel + Style
 proudly featured Argyle Dreaming™ too.



The exceptional story and design of
 Argyle Dreaming™ also captivated
 viewers of Channel Nine News.

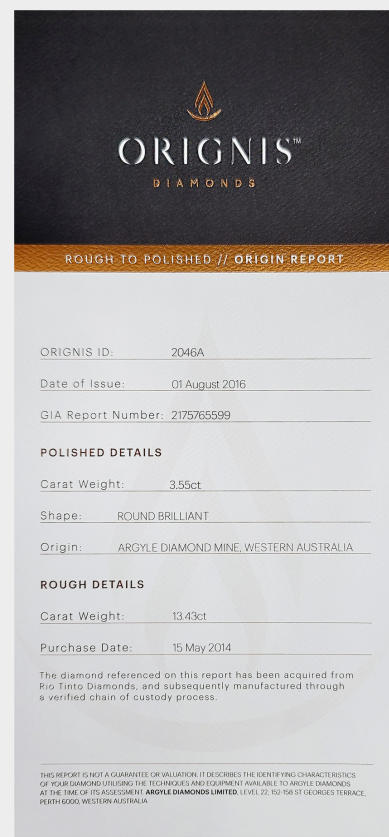


Provenance from an Ancient Birthplace

To certify their Argyle Diamond origins, Rio Tinto issued Orignis certificates for each of the diamonds shaped from the original 13.42ct Orignis Rough.

They were also certified by the Gemological Institute of America (GIA) with their certificates showing their unique laser inscriptions from Orignis and Argyle.

Both Orignis and GIA certifications are recognised for having the highest standard of reliability, consistency and integrity for diamonds across the globe.





August 01, 2016

GIA Report Number 2173765501
Shape and Cutting Style Round Brilliant
Measurements 6.36 - 6.42 x 4.16 mm

GRADING RESULTS

Carat Weight	1.08 carat
Color Grade	F
Clarity Grade	VVS2
Cut Grade	Good

ADDITIONAL GRADING INFORMATION

Polish Good
Symmetry Very Good
Fluorescence Strong Blue

Inscription(s): *A* 358418. *C* 2056A

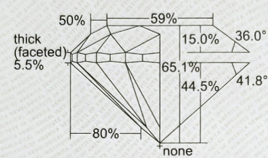
Comments: Internal graining is not shown.

www.qia.edu

GIA REPORT
2173765501

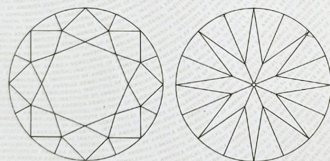
Verify this report at gia.edu

PROPORTIONS



Profile to actual proportions

CLARITY CHARACTERISTICS



KEY TO SYMBOLS*

☐ Pinpoint

☒ Natural

* Red symbols denote internal characteristics (inclusions). Green or black symbols denote external characteristics (blemishes). Diagram is an approximate representation of the diamond, and symbols shown indicate type, position, and approximate size of clarity characteristics. All clarity characteristics may not be shown. Details of finish are not shown.



August 01, 2016

GIA Report Number 2175765599
Shape and Cutting Style Round Brilliant
Measurements 9.50 - 9.58 x 6.12 mm

GRADING RESULTS

Carat Weight	3.55 carat
Color Grade	D
Clarity Grade	VVS2
Cut Grade	Good

ADDITIONAL GRADING INFORMATION

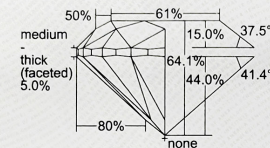
Polish	Very Good
Symmetry	Very Good
Fluorescence	Very Strong Blue

Inscription(s): 2046A. 358417

Comments: Internal graining is not shown.

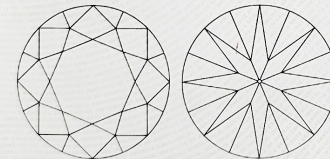
GIA REPORT
2175765599

PROPORTIONS



Profile to actual proportions

CLARITY CHARACTERISTICS



KEY TO SYMBOLS*

Feather

* Red symbols denote internal characteristics (inclusions). Green or black symbols denote external characteristics (blemishes). Diagram is an approximate representation of the diamond, and symbols shown indicate type, position, and approximate size of clarity characteristics. All clarity characteristics may not be shown. Details of finish are not shown.

are uniquely identified in a Rio Tinto Diamonds database, and are traced from source within a chain of custody process developed and monitored by Rio Tinto's independent auditors.

16 September 2019

THIS DOCUMENT IS NOT A GUARANTEE OR VALUATION. IT DESCRIBES THE IDENTIFYING CHARACTERISTICS OF YOUR DIAMOND UTILISING THE GRADING TECHNIQUES AND EQUIPMENT AVAILABLE TO ARGYLE DIAMONDS AT THE TIME OF ITS ASSESSMENT. ARGYLE DIAMONDS LIMITED, LEVEL 18, 152-158 ST GEORGES TERRACE, PERTH 6000, WESTERN AUSTRALIA.

ARGYLE PINK™ DIAMONDS

GEM IDENTIFICATION AND AUTHENTICITY DOCUMENT

ID No.	433019
Carat Weight	0.09ct
Shape	Oval
Clarity	SI/AV
Colour	7P
Date	16 September 2019

are uniquely identified in a Rio Tinto Diamonds database, and are traced from source within a chain of custody process developed and monitored by Rio Tinto's independent auditors.

16 September 2019

THIS DOCUMENT IS NOT A GUARANTEE OR VALUATION. IT DESCRIBES THE IDENTIFYING CHARACTERISTICS OF YOUR DIAMOND UTILISING THE GRADING TECHNIQUES AND EQUIPMENT AVAILABLE TO ARGYLE DIAMONDS AT THE TIME OF ITS ASSESSMENT. ARGYLE DIAMONDS LIMITED, LEVEL 18, 152-158 ST GEORGES TERRACE, PERTH 6000, WESTERN AUSTRALIA.

PINK™
GEM IDENTIFICATION AND AUTHENTICITY DOCUMENT

GEM IDENTIFICATION AND AUTHENTICITY DOCUMENT

ID No.	433161
Carat Weight	0.08ct
Shape	Pear
Clarity	SI/AV
Colour	6PP
Date	16 September 2019

The diamonds are uniquely identified in a Rio Tinto Diamonds database, and are traced from source within a chain of custody process developed and monitored by Rio Tinto's independent auditors.

THIS DOCUMENT IS NOT A GUARANTEE OR VALUATION. IT DESCRIBES THE IDENTIFYING CHARACTERISTICS OF YOUR DIAMOND UTILISING THE GRADING TECHNIQUES AND EQUIPMENT AVAILABLE TO ARGYLE DIAMONDS AT THE TIME OF ITS ASSESSMENT. ARGYLE DIAMONDS LIMITED, LEVEL 18, 152-158 ST GEORGES TERRACE, PERTH 6000, WESTERN AUSTRALIA.

GEM IDENTIFICATION AND AUTHENTICITY DOCUMENT

ID No.	433161
Carat Weight	0.08ct
Shape	Oval
Clarity	SI/AV
Colour	6PR
Date	16 September 2019

The diamonds are uniquely identified in a Rio Tinto Diamonds database, and are traced from source within a chain of custody process developed and monitored by Rio Tinto's independent auditors.

THIS DOCUMENT IS NOT A GUARANTEE OR VALUATION. IT DESCRIBES THE IDENTIFYING CHARACTERISTICS OF YOUR DIAMOND UTILISING THE GRADING TECHNIQUES AND EQUIPMENT AVAILABLE TO ARGYLE DIAMONDS AT THE TIME OF ITS ASSESSMENT. ARGYLE DIAMONDS LIMITED, LEVEL 18, 152-158 ST GEORGES TERRACE, PERTH 6000, WESTERN AUSTRALIA.

GEM IDENTIFICATION AND AUTHENTICITY DOCUMENT

ARGYLE PINK™
DIAMONDS

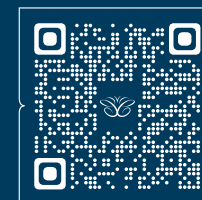


Argyle Dreaming™ showcases a once-in-a-lifetime collection of pink, blue, yellow, champagne and white diamonds, unearthed from Western Australia's Argyle Diamond Mine. The culmination of remarkable provenance, rarity and exquisite hand craftsmanship, this iconic jewel holds with it an important piece of Australian history.

Calleija

Discover More

Scan the QR code to see Argyle Dreaming™ being created by talented Calleija artisans.



ARGYLE PINK
DIAMONDS
SELECT ATELIER

RioTinto



AUSTRALIA

SYDNEY

The Fullerton Hotel Sydney

No.1 Martin Place

Sydney NSW 2000

+61 (0)2 9233 6661 sydney@calleija.com.au

GOLD COAST

Marina Mirage, Seaworld Drive

Main Beach QLD 4217

+61 (0)7 5528 3666 mirage@calleija.com.au

UNITED KINGDOM

LONDON

No.7 The Royal Arcade

Albemarle Street Entrance

28 Old Bond Street

Mayfair W1S 4SG

+44 (0)20 7499 8490 london@calleija.com



CALLEIJA.COM [@CALLEIJAJEWELS](https://www.instagram.com/CALLEIJAJEWELS)